



PRINT MENU SELECTION FOR PDF OUTPUT

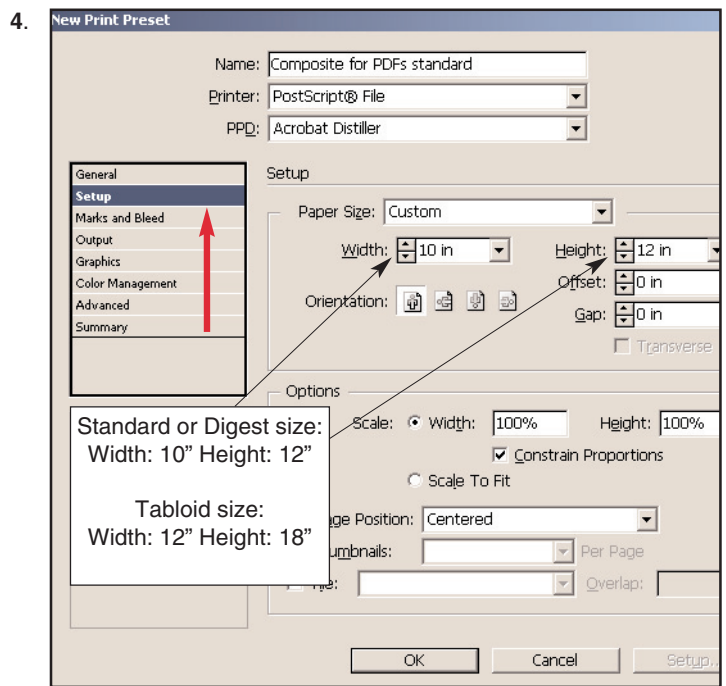
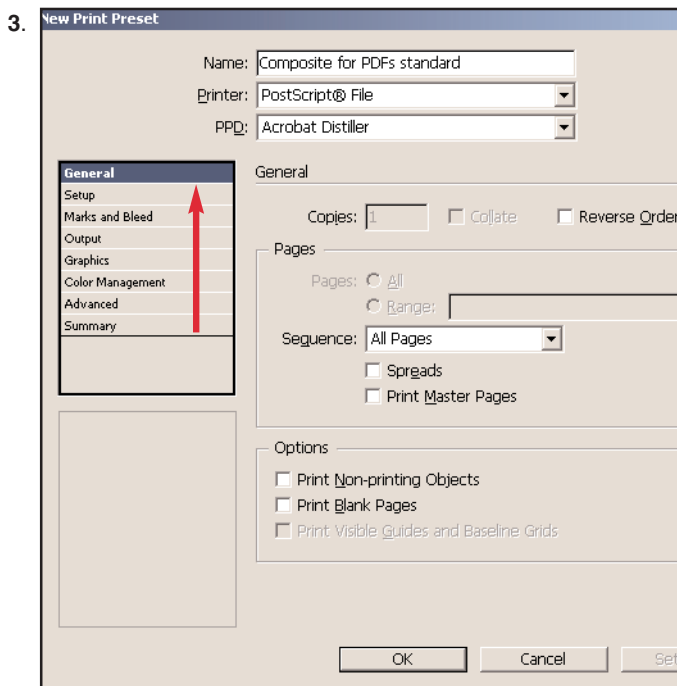
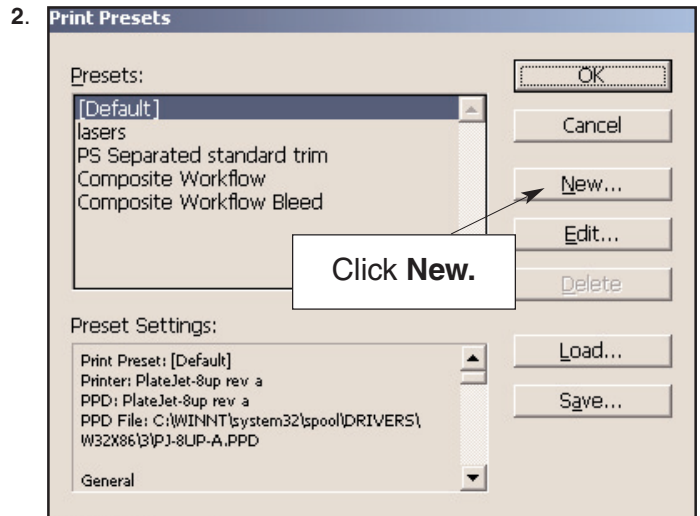
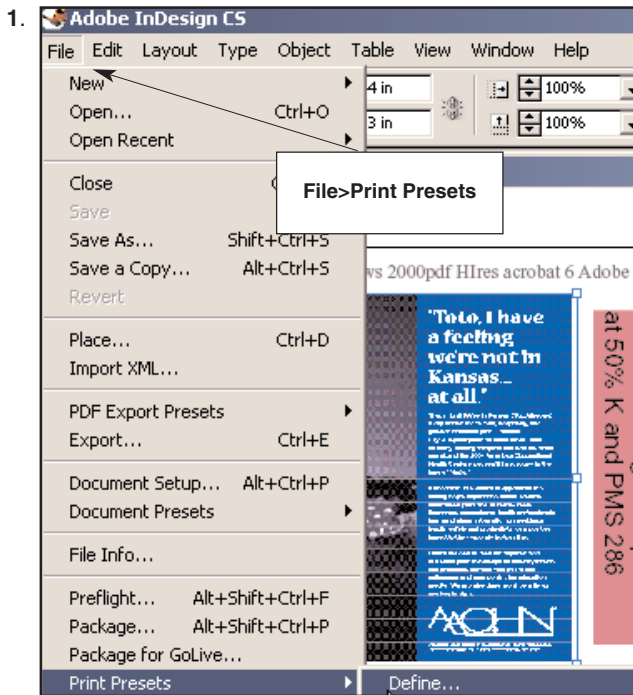
PDF Print Styles for InDesign CS Windows 2000, XP

These instructions will guide you in setting up your Print Menus before making PDF files to send to Publishers Press. This assumes Acrobat Distiller ppd (Acrobat Distiller 5) or Adobe PDF ppd (Acrobat Distiller 6) has been installed. See Creating Adobe Printer setup instructions on PDF P-95 to 95.2. Contact your DSR or CSR with questions.

Under **File**, select **Print Presets > Define**. Choose **New**.

Make the selections shown in boxes 3 through 11, by clicking on each menu tab.

Printer Styles continued on the next page

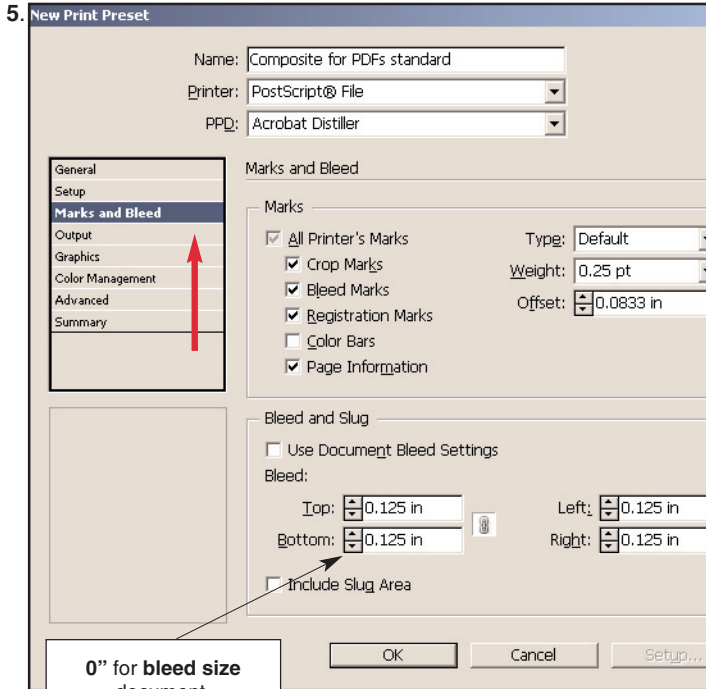




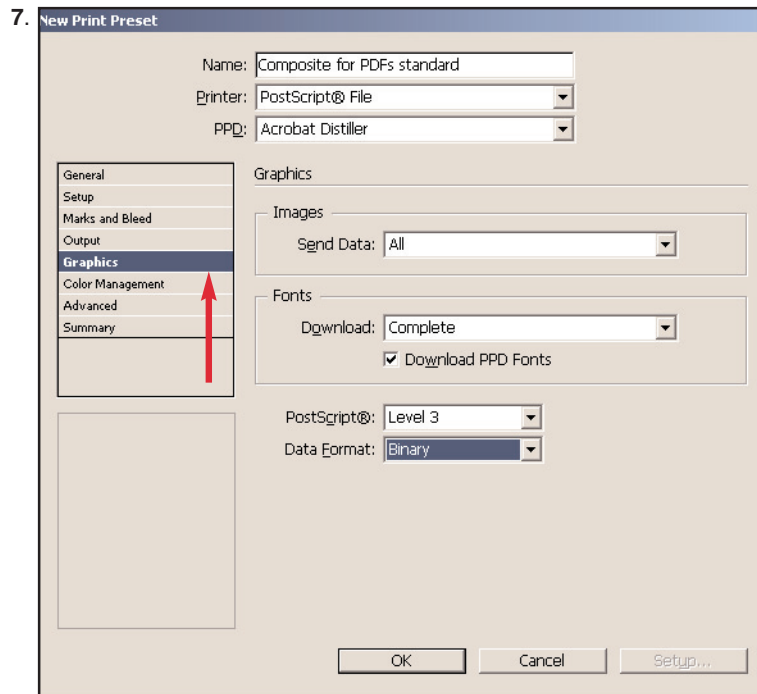
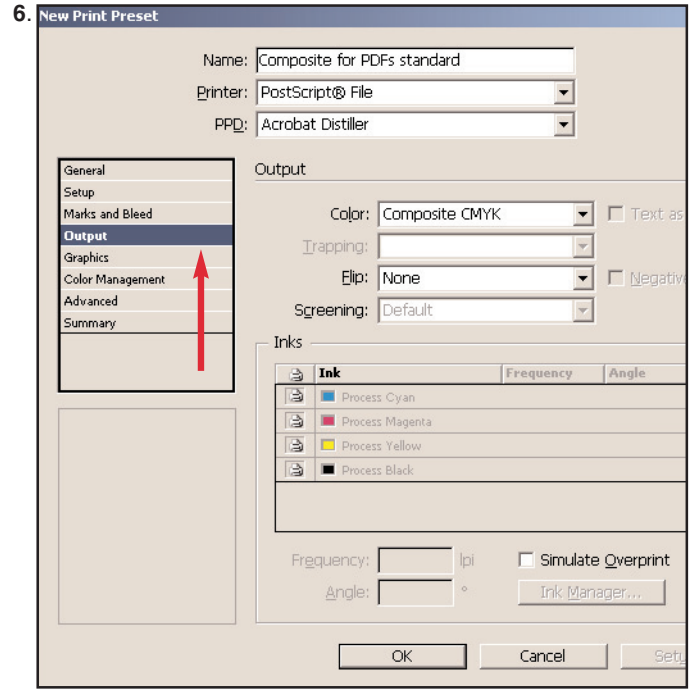
PRINT MENU SELECTION FOR PDF OUTPUT

PDF Print Styles for InDesign CS Windows 2000, XP *Cont'd*

Printer Styles continued on the next page



0" for bleed size document.
.125" for trim size document.

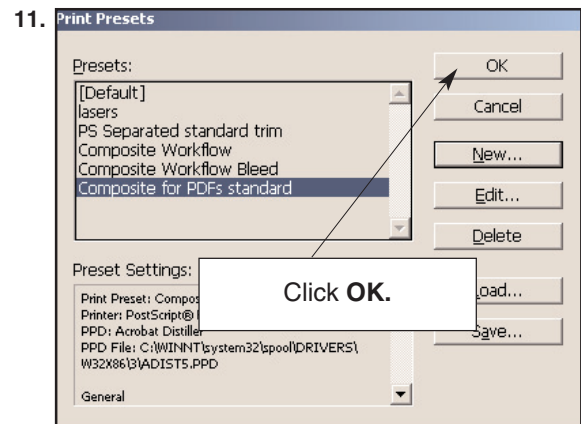
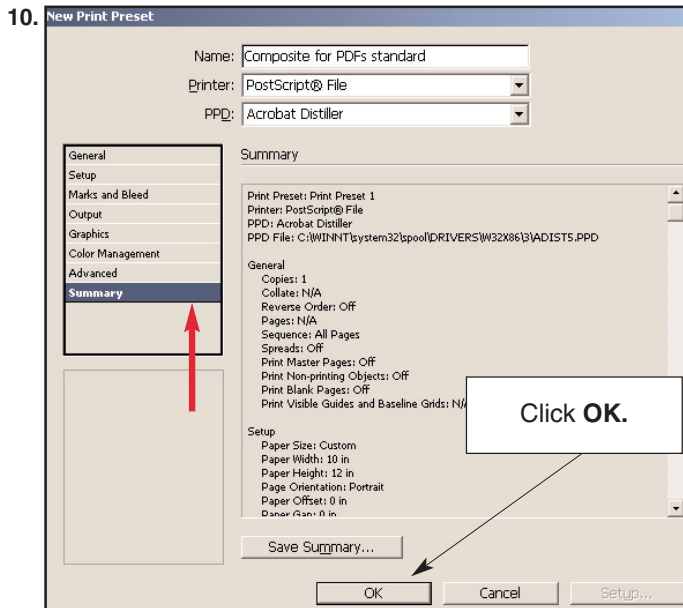
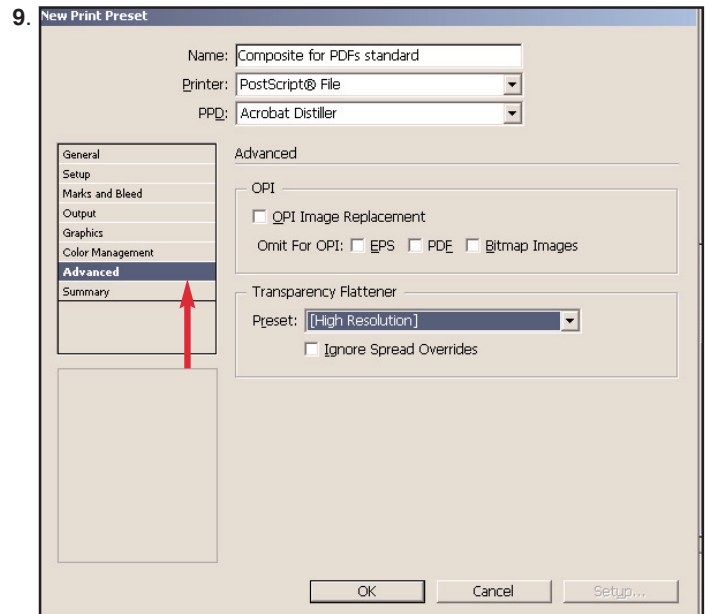
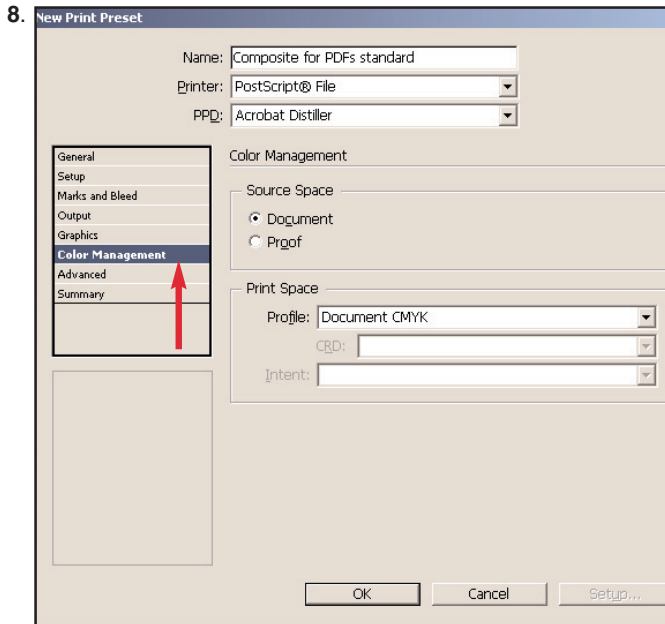




PRINT MENU SELECTION FOR PDF OUTPUT

PDF Print Styles for InDesign CS Windows 2000, XP *Cont'd*

PostScripting instructions on the next page



Your new printer style is now available under
File > Print Presets.



POSTSCRIPTING FOR PDF OUTPUT

InDesign CS PostScripting PDFs Windows 2000, XP

Printer Styles help to save time and reduce printing-related errors by allowing you to save and apply frequently used settings. See pages PDF 116 to 116.2 for instructions.

Before PostScripting for PPS, please make sure:

Document Setup - Except for specialty items, all pages must be created to the same size. If creating documents to *trim*, *File/Document Setup* should be the exact trim size of your publication with bleed items extending at least 1/8" beyond the document edge. If creating documents to *bleed*, *File/Document Setup* should be the trim size of your publication plus 1/8" added to the width and 1/4" added to the height.

**Remember that SWOP standards recommend all live matter be 1/4" away from trim.

Preflight your Document - Under *File*, select **Preflight**.

1. **Summary** gives you an overview of the entire publication. The *Warning Triangles* show problems. For a detailed list, click each item shown under Summary.

2. **Fonts:** The **Status** column shows if the font is open. Status

column must say **OK**. If it says "Missing", cancel the Preflight window and load the missing fonts.

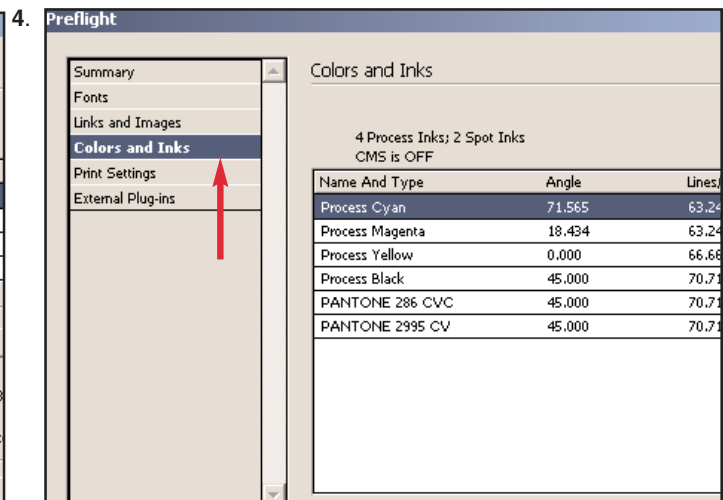
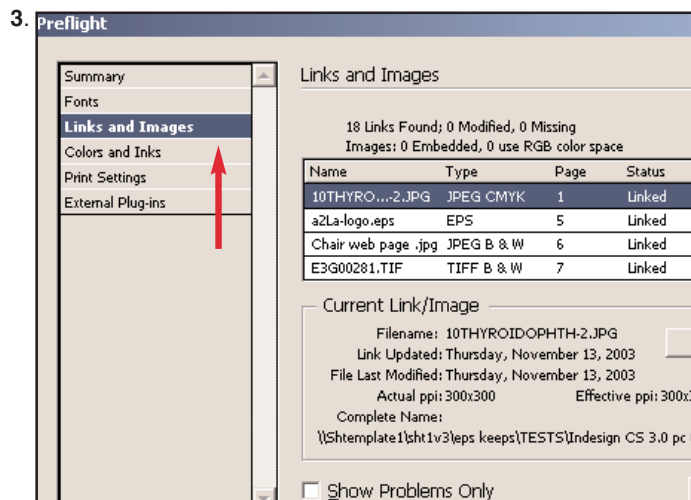
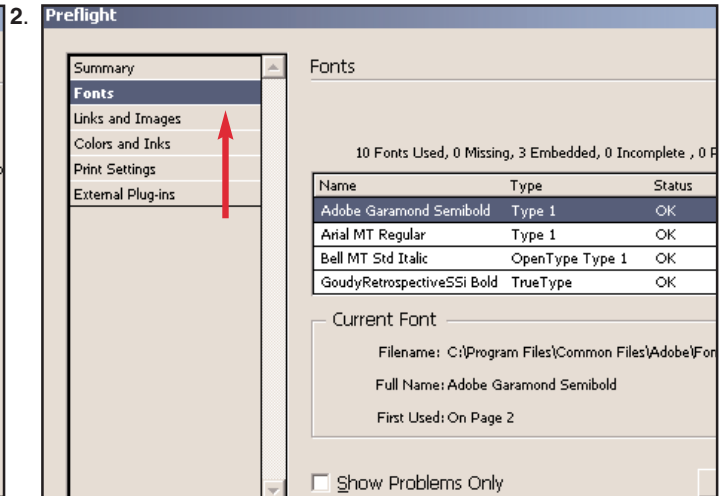
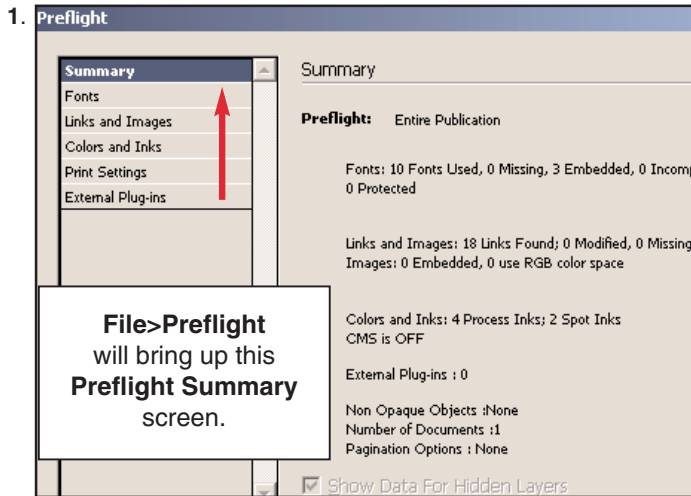
3. **Links and Images: Status** must be **Linked** for all images. High resolution 4/c images must be in **CMYK** mode instead of **RGB**. If the **Type** column reads **RGB**, you will need to resave that image in **CMYK** mode.

4. **Colors and Inks:** All colors should be process, unless you are using PMS (spot) colors. Remember to check colors imported from all graphic programs after they appear in your InDesign menu. **Note:** Preflight reports images in RGB mode, but does not report RGB colors. Check your colors in the Swatches Palette. The color type boxes on the right of the Swatches Window will show RGB color as three bars. CMYK colors will show as four triangles.

5. **Print Settings and External Plug-ins:** These screens can also be viewed to see your print settings and any external plug-ins that are being used.

Click **Cancel** to close the Preflight window.

PostScripting instructions continued on the next page





POSTSCRIPTING FOR PDF OUTPUT

InDesign CS PostScripting PDFs Windows 2000, XP *Cont'd*

Before PostScripting for PDFs make sure you have created Adobe Distiller Job Options and Watch folders. Please contact your Desktop Service Representative for the appropriate instructions.

To use the Printer Style, under **File**, select **Print Presets**.

In the **Print Preset** pop down menu, select the style needed. For **Pages**, select the appropriate page number **Range** or **All**. PDF files can contain multiple pages, but please limit them to 5 to 10 pages per PDF file. Click **Save**.

PostScript File dialogue box: Give the PostScript file a name which includes your title initials in lower case letters and page number(s). File name should end with a lower case extension .ps. The file name can only be 14 characters including the extension. No spaces, punctuation, or special characters in the name except for a period and an under bar can be used before the extension. An example of a multi-page file is "abc_001_008.ps". Select your **IN** folder for your PostScript file destination. Click **Save** to continue the printing process.

